

Researchers from **Social Sciences and Humanities** are invited to participate in the following **ESF-LiU Conference**:

Religion, Gender and Human Rights: Challenges for Multicultural and Democratic Societies

Scandic Linköping Vast, Sweden, 21-25 June 2011

Chaired by: **Niamh Reilly**, National University of Ireland, IE; **Stacey Scriver**, National University of Ireland, IE & **Sara Silvestri**, City University London, UK

Closing date for applications: **29 March 2011**.

Full conference information accessible online from <http://www.esf.org/conferences/11352>.

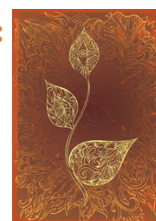


Religion, Gender and Human Rights: Challenges for Multicultural and Democratic Societies

ESF-LiU Conference

Scandic Linköping Vast, Sweden, 21-25 June 2011

Closing date for applications: 29 March 2011.



Programme

This conference will examine the nexus of religion, gender, identity, human rights and politics with a particular focus on Europe in a context of globalisation. It will fill a gap in current literature on religion, politics and society, which tends to ignore or treat as secondary the gendered dimensions of these developments. Toward this end, the conference seeks to advance knowledge and understanding, and to build a coherent research network, around the following core goals to: 1) Move gender from the periphery to the centre of contemporary debates about the role of religion in public and political life; 2) Stimulate new feminist and gender scholarship concerned with the critical (re)interpretation of religions and gendered faith-based practices across different religious traditions; 4) Foreground and apply an 'intersectional' lens to issues of religion, gender and women's human rights, and bring into dialogue feminist theorizing on gender and religion across global 'South' and global 'North' perspectives; 5) Expand the horizon of gender-focused human rights analysis at the nexus of religion, gender, citizenship and rights. The conference will bring together senior and emerging scholars across a range of relevant disciplines including, but not limited to, political science and international relations, sociology, gender and women's studies, human rights and socio-legal studies, development, anthropology, European studies, and religious studies.

Strand 1: Identity, representation and multiculturalism

Panel I - Gender and religion: identity, religious subjectivities and law and politics

Roundtable I - Gender, religion and identity: immigration, integration and

multiculturalism

Strand 2: Religious subjectivities and critiques

Panel II - Religious subjectivities and gender critiques of religions - Foregrounding feminist and gender studies in religion across different traditions

Roundtable II - 'Religion' in the academy through a gender lens: challenges in theory, methods and practice - A conversation between scholars working 'in religion' and 'on religion'

Strand 3: Law, rights, states and politics

Roundtable III - Gender, religion, human rights and the state - Focus on the role of law and state in regulating and/or accommodating 'religion', religious expression and balancing 'rights'

Panel III - Secularization, secularism and the public sphere: engendering debates - Exploring competing ideas about 'secularization' and the principle of secularism in multicultural democracies

Panel IV - Gender and religion in international/transnational politics and global issues - Religion in national/transnational politics and policy making; religious identity/religious actors in conflict/post-conflict contexts

Invited speakers will include:

Fadwa Al-Labadi, Al-Quds U., IL; **Valerie Amiraux**, U. Montreal, CA; **Tina Beattie**, Roehampton U., UK; **Sarah Bracke**, KU Leuven, BE; **Geraldine Finn**, Carleton U., CA; **Charlotte Fonrobert**, Stanford U., US; **Naomi Goldenberg**, U. Ottawa, CA; **Breda Gray**, U. Limerick, IE; **Anka Grzywacz**, Catholics for Choice, PL; **Fatemeh Haghghatjoo**, UMB Boston, US; **Harriet Harris**, U. Edinburgh, UK; **Anne Jenichen**, U. Bremen, DE; **Catarina Kinnvall**, Lund U., SE; **Titia Loenen**, Utrecht U., NL; **Vesna Malesevic**, NUI Galway, IE; **Elif Medina**, U. Vienna, AT; **Rubya Mehdi**, U. Copenhagen, DK; **Stephanie Mitchem**, U. South Carolina, US; **Jeff Redding**, CNRS, FR / St. Louis U., US; **Sawitri Saharso**, U. Twente, NL; **Naveed Sheikh**, Keele U., UK; **Sara Silvestri**, City U. London, UK; **Jawad Syed**, U. Kent, UK; **Andrew Yip**, U. Nottingham, UK; **Nira Yuval Davis**, U. East London, UK.

How to Participate?

The conference is open to scientists world-wide, whether from academia or industry. Attendance is possible only after successful application. A certain number of grants will be available for early-stage researchers to cover the conference fee and possibly part of the travel costs. Grant requests should be made by ticking appropriate field(s) in the paragraph "Grant application" of the [application form](#).

Closing date for applications: **29 March 2011**.

ESF contact for further information: Jean Kelly- jkelly@esf.org.

This conference is organised by the European Science Foundation (ESF), in partnership with Linköping University (LiU).

Please feel free to circulate the [conference flyer](#) to any of your contacts to whom this conference would be of interest.

Why did I receive this mail?

This call was sent to you because the Programme Committee thought that this event would be of interest to you. If you would like to be kept informed about ESF Conferences in the field of **Social Sciences/Humanities**, please use the following link to subscribe to [ESF Conferences mailing-list](#). If you do not want to receive any more updates please use the link below to unsubscribe.

Sponsoring

Interested in sponsoring this conference? For more information, please go to our [Sponsor Resource Center](#) !

